

Greater sensitivity than traditional guaiac-based methods. Increased specificity to lower GI bleeding makes SPECIFIC an ideal tool for colorectal cancer screening.

Benefits

- Ability to screen two specimens using a single test cassette
- Meets the American Cancer Society multiple-day testing recommendation
- No diet or drug restrictions
- Patient-friendly collection procedure
- Favorable reimbursement

Reliability

- Analytical Sensitivity: 50ng Hb/ml buffer or 50µg Hb/g feces
- Specific for human hemoglobin
- Manufactured in the USA

Convenience

- 30-day room temperature specimen stability
- 24-month shelf life from date of manufacture
- Physician Office (HSSPCAS-25) or Patient Take Home Kit (HSSP-25) for physicians & patients



CLIA Waived

Reimbursement Codes

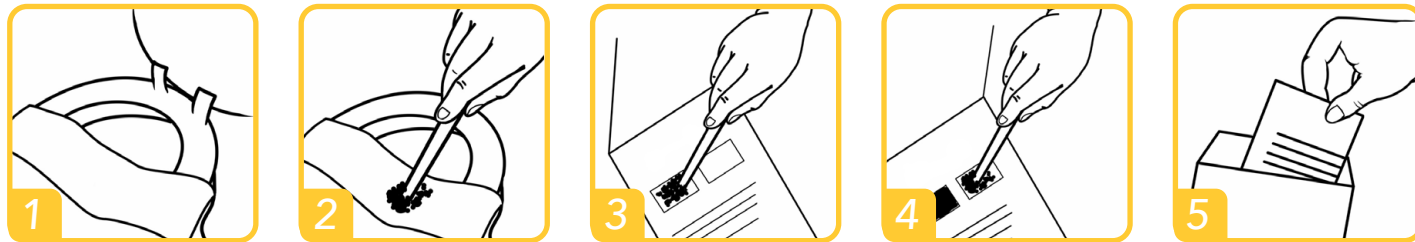
- G0328
Colorectal cancer screening with immunochemical FOBT
- 82274
Blood, occult, by fecal hemoglobin determination with immunochemical FOBT

**All reimbursement codes should be accompanied by an ICD9 Code*

Contact your medical supplies distributor for more information.

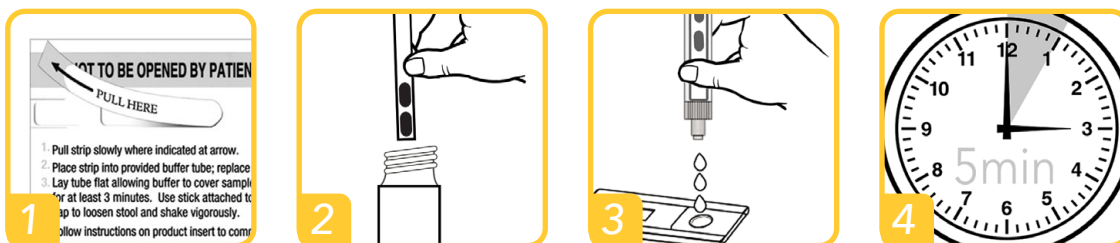
www.immunostics.com
1 (800) 722-7505

Patient Instructions



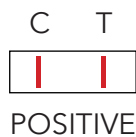
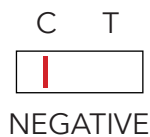
1. Lift toilet seat and position provided sample collection paper across rim of toilet bowl.
2. Deposit bowel movement onto collection paper. Collect sample from 4 different sites of the stool using one of the provided applicator sticks.
3. Place sample card on a flat surface, open flap of **DEVEL-A-TAB** sample card. Apply sample to window 1. Spread evenly and fill window with stool sample. Close flap. Flush collection paper.
4. Repeat steps 2 thru 4 for second bowel movement. Apply sample to window 2. Close the flap.
5. Insert completed **DEVEL-A-TAB** sample card into enclosed mailing pouch and return to healthcare provider.

Physician Instructions



1. Slowly peel back the sample tab.
2. Place sample strip into preparation buffer tube and replace cap. Shake tube vigorously.
3. Squeezing the tube slightly, dispense three (3) drops into cassette well.
4. Read result at five (5) minutes.

Result Reading



Ordering Information

hema-screen SPECIFIC Kit
iFOBT (HSSP-25)
35 Mailing Envelopes
35 DEVEL-A-TAB slides
25 Test Cassettes
25 Buffer Tubes

hema-screen SPECIFIC Test
iFOBT (HSSPCAS-25)
25 Test Cassettes
25 Buffer Tubes

hema-screen SPECIFIC Mailing Envelopes
iFOBT (HSSPENV-20)
20 Mailing Envelopes
20 DEVEL-A-TAB slides